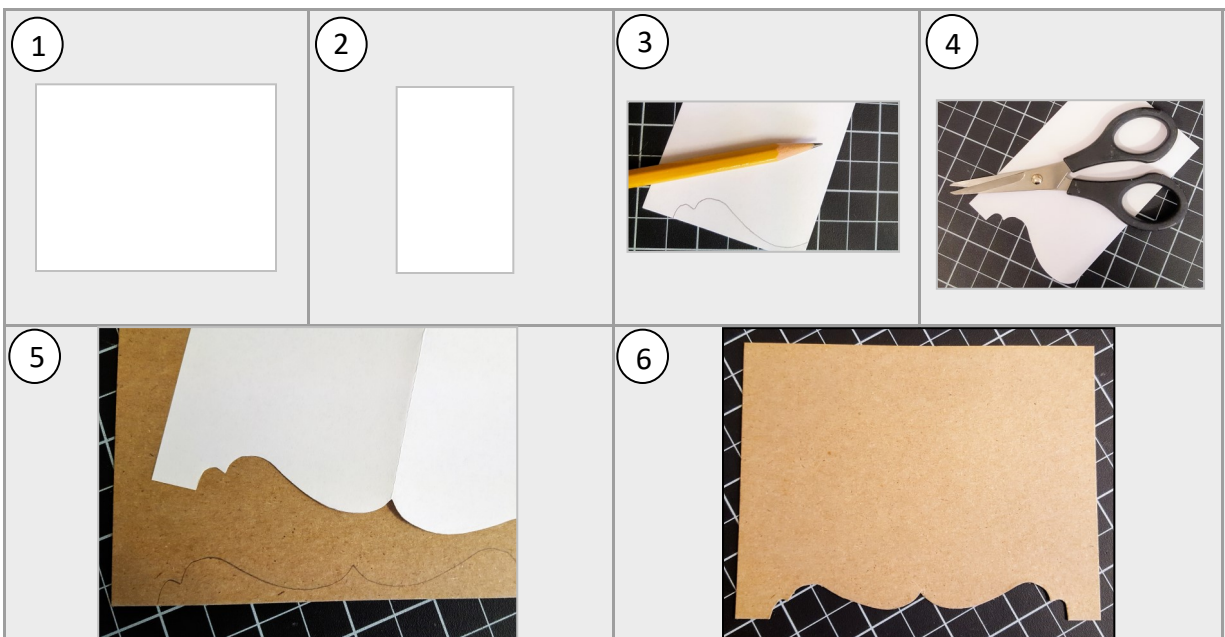




## *How to Make a Pretty & Simple Card Base Template*

1. Cut a piece of copy paper to 4.25" x 5.50".
2. Fold in half.
3. Pencil a curvy line on the bottom edge as pictured.
4. Cut through the folded piece on the pencil line as pictured.
5. On 4.25" x 5.50" lightweight cardboard, trace the copy paper design onto it.
6. Cut cardboard on pencil line to make permanent template.



*Linda Aarhus*

Stampin' Up! Demonstrator

EMAIL: [stampingforfun@comcast.net](mailto:stampingforfun@comcast.net) • CELL-TEXT: 360-936-2030

BLOG: [PolkaDotsAndPaper.com](http://PolkaDotsAndPaper.com)